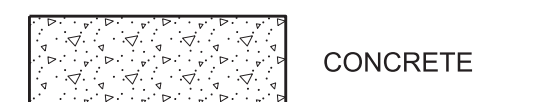


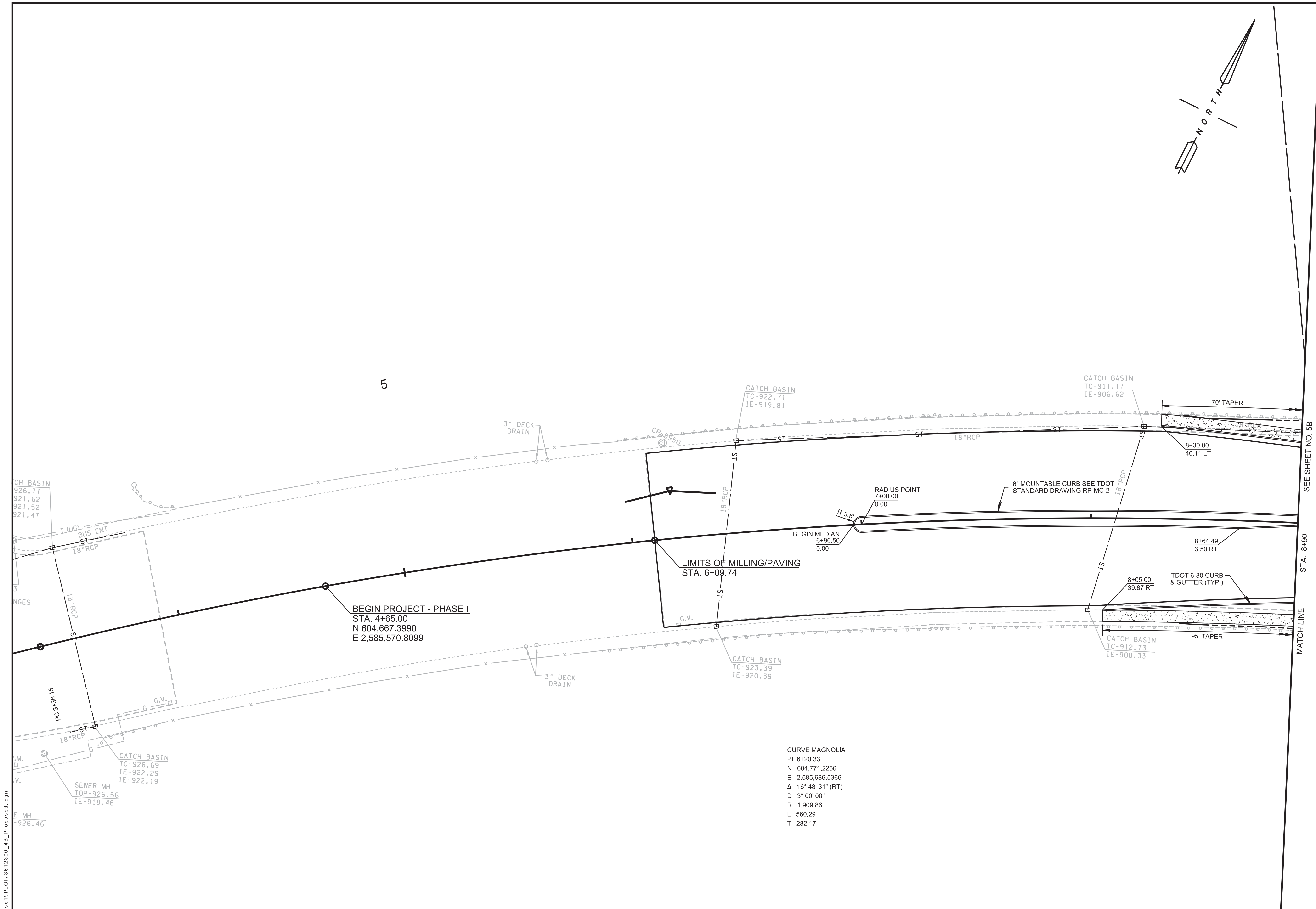
PROJECT No.	YEAR	SHEET No.	
15A-R-0584	2017	4B	
REVISIONS			
No.	DATE	BY	BRIEF DESCRIPTION

LEGEND



NOTES:

1. ALL STATION AND OFFSETS SHOWN AT FACE OF CURB
2. WHEN CURBS PRESENT, THE SIDEWALK WIDTHS DO NOT INCLUDE THE SIX INCH CURB WIDTH
3. CROSS DRAINS WILL BE INSTALLED DURING NORTH SIDE PHASE OF CONSTRUCTION AND TEMPORARY GRATE UTILIZED UNTIL SOUTH SIDE CURB CONSTRUCTION COMPLETED



5

BEGIN PROJECT - PHASE I
 STA. 4+65.00
 N 604,667.3990
 E 2,585,570.8099

LIMITS OF MILLING/PAVING
 STA. 6+09.74

CURVE MAGNOLIA
 PI 6+20.33
 N 604,771.2256
 E 2,585,686.5366
 Δ 16° 48' 31" (RT)
 D 3° 00' 00"
 R 1,909.86
 L 560.29
 T 282.17

SEE SHEET NO. 5B
 STA. 8+90
 MATCH LINE



Location of all underground utilities shown hereon are approximate and are based on field location of visible structures such as catch basins, manholes, water gates, etc. and compiling information from utility company plans. The utilities shown hereon may not comprise all of the existing utilities in this area, either in service or abandoned. In accordance with The Underground Utility Damage Prevention Act, prior to any excavation work call Tennessee One Call System, Inc. at 1-800-351-1111.



CITY OF KNOXVILLE
 OFFICE OF REDEVELOPMENT

PROPOSED LAYOUT
 MAGNOLIA AVENUE
 STREETSCAPE PROJECT
 PHASE I
 BEGIN OF PROJECT TO STA. 8+90
 SCALE: 1" = 20'

DRAWN: ACM
 DESIGNED: MLK
 DATE: 11-06-17
 CHECKED: AW
 APPROVED: COT

11/10/2017 F:\36136123\3612300_04_CADD\CI\VL\Phase11_PL\OTI_3612300_4B_Pr\propose.dgn