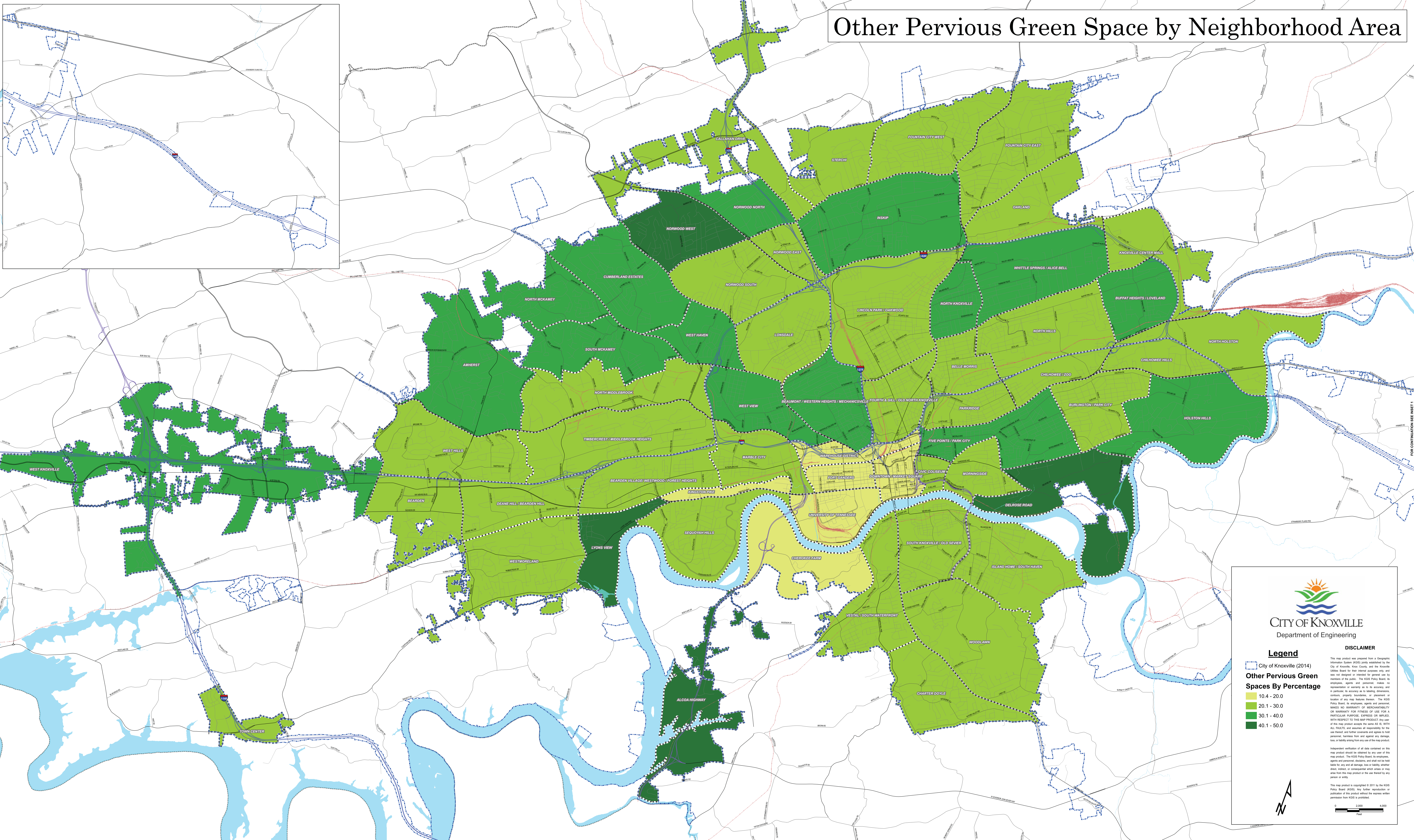
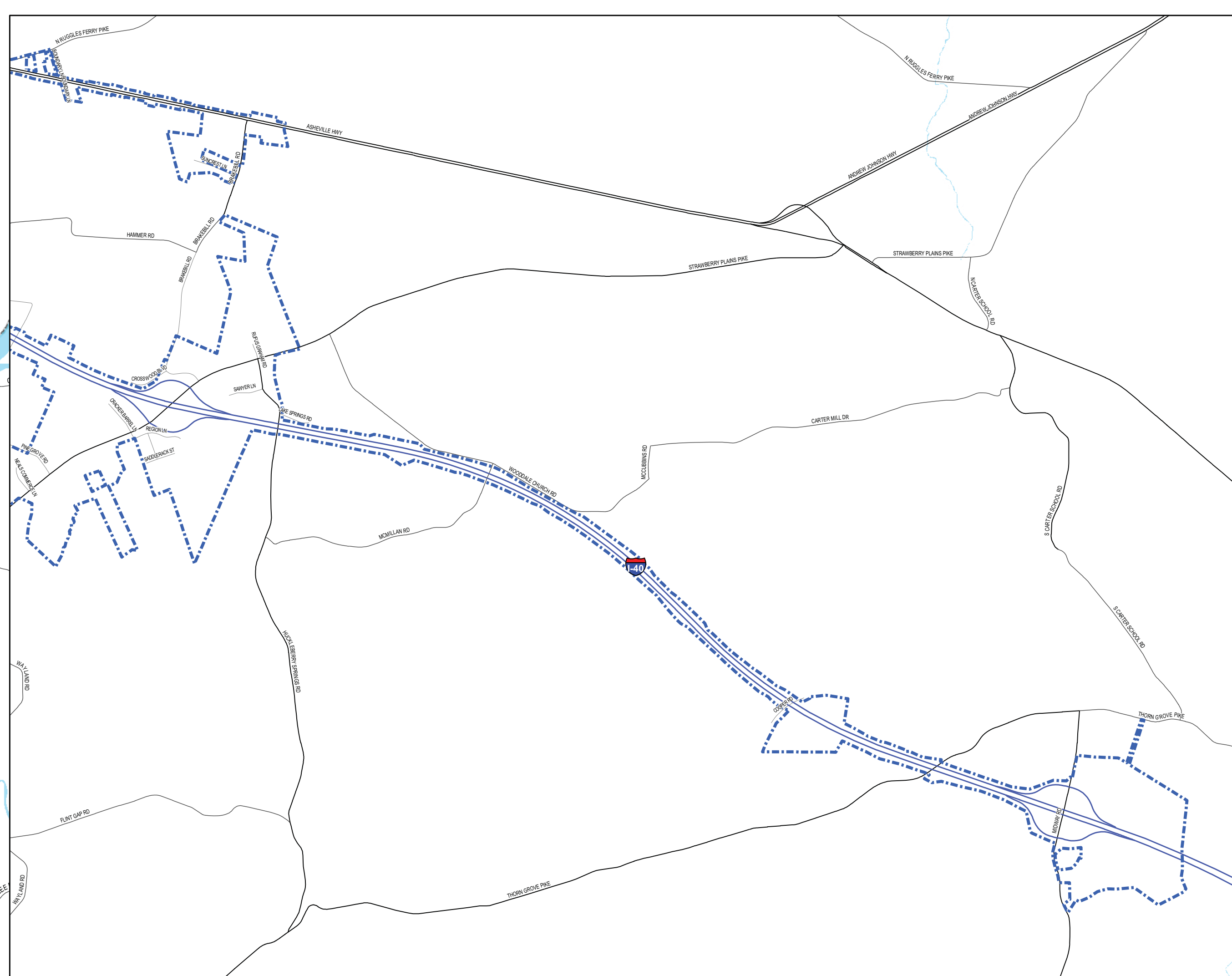



Other Pervious Green Space by Neighborhood Area





CITY OF KNOXVILLE
Department of Engineering

Legend

City of Knoxville (2014)

Other Pervious Green Spaces By Percentage

- 10.4 - 20.0
- 20.1 - 30.0
- 30.1 - 40.0
- 40.1 - 50.0

DISCLAIMER

This map product was prepared from a Geographic Information System (GIS) data established by the City of Knoxville, Knox County, and the Knoxville Utilities Board for their internal systems only, and was not designed or intended for general use by members of the public. The GIS Policy Board, its employees, agents and personnel, makes no representation or warranty as to its accuracy and in particular its accuracy as to identity, dimensions, content, property boundaries, or placement or location of any map features thereon. The GIS Policy Board, its employees, agents and personnel, MAKES NO WARRANTY OF MERCHANTABILITY OR FITNESS FOR USE FOR A PARTICULAR PURPOSE, EXPRESS OR IMPLIED, WITH RESPECT TO THIS MAP PRODUCT. Any user of this map product accepts the same AS IS, WITH ALL FAULTS, and assumes all responsibility for the use thereof, and further consents and agrees to hold harmless, defend, indemnify and defend any damages, loss, or liability arising from any use of the map product.

Independent verification of all data contained on this map product should be obtained by any user of the map product. The GIS Policy Board, its employees, agents and personnel, disclaims, and shall not be held liable for, any and all damage, loss or liability, whether direct, indirect, or consequential which arises or may arise from this map product or the use thereof by any person or entity.

This map product is copyrighted © 2011 by the GIS Policy Board (GISB). Any further reproduction or publication of this product without the express written permission from GISB is prohibited.

