

# Regional Plan for Sustainable Development (RPSD)



# Project Overview: Regional Plan for Sustainable Development (RPSD) aka PlanET

---

- **Purpose:** A multi-jurisdictional planning effort to integrate housing, land use, economic and workforce development, transportation, and infrastructure through the creation or implementation of a *Regional Plan for Sustainable Development*
- **Geography:** Knoxville MSA
- **Focus:** Capacity building, healthy communities, housing, economic development, and land use/transportation
- **Award:** \$4.3 million/ 57%leveraged (*in-kind*) locally (\$2.4 million) - total project amount of \$6.7 million
- **Lead Agencies:** City of Knoxville, the Knoxville Regional TPO, Knoxville-Knox County MPC, and Consortium partners

# Project Background

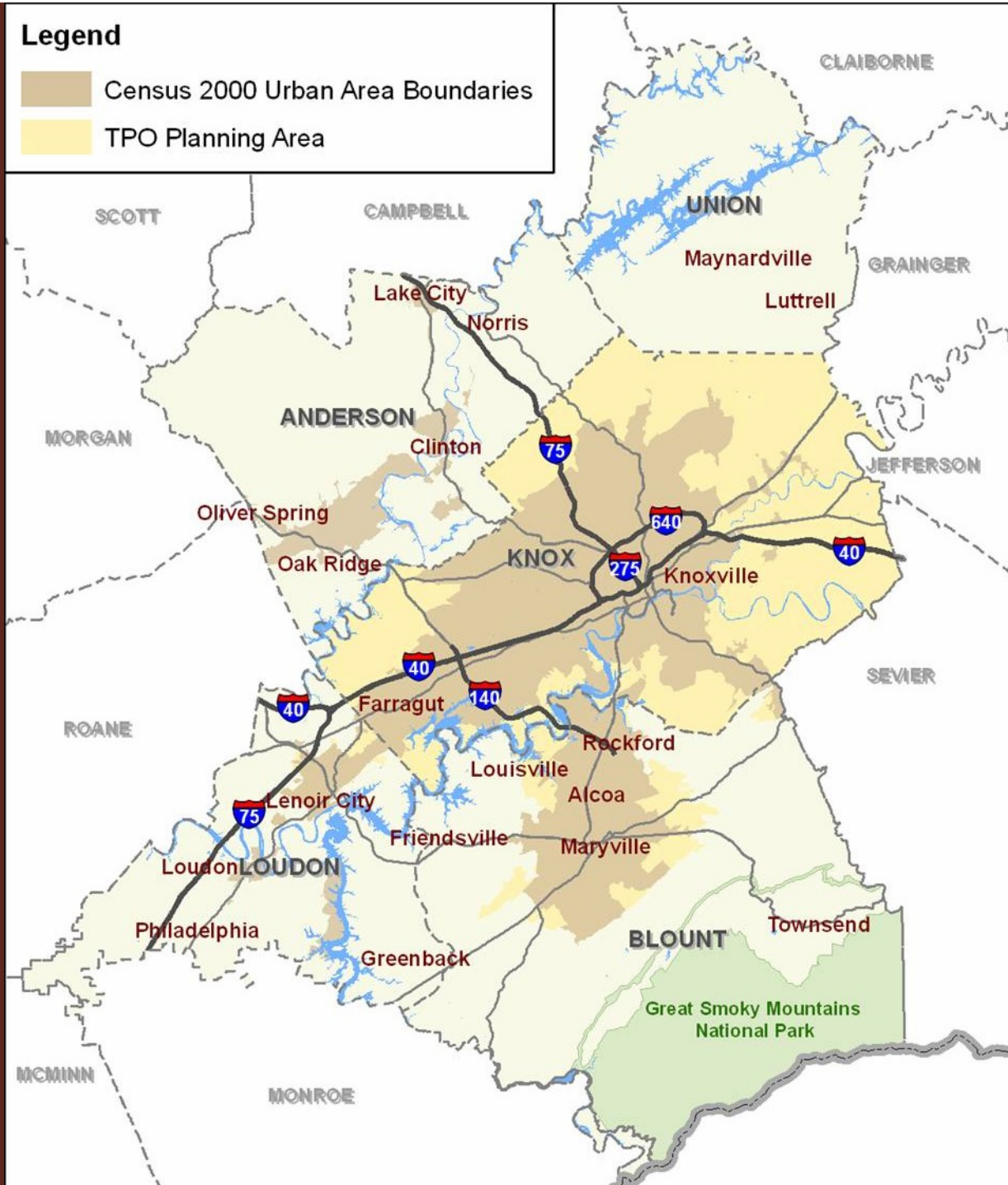
---

## Partnership for Sustainable Communities: U.S. DOT, U.S. HUD, & U.S. EPA

- **Congress allocated** - \$100 million for regional integrated *planning* initiatives
- **Eligible projects** - metropolitan/multi-jurisdictional planning efforts to integrate housing, land use, economic and workforce development, transportation, and infrastructure through the creation or implementation of a *Regional Plan for Sustainable Development*
- **Funding** - 20% of funding match required in leveraged resources such as cash, in-kind contributions, staff-time, etc

## Legend

- Census 2000 Urban Area Boundaries
- TPO Planning Area



## STUDY AREA COUNTIES

Anderson  
Blount  
Loudon  
Knox  
Union

# Committed Partners

---

- City of Alcoa
- Arts & Culture Alliance
- Blount County Community Action Agency
- Blount County
- Blount County Chamber
- East Tennessee Design Center
- East Tennessee Development District
- East Tennessee Quality Growth
- Industrial Development Board  
Blount County Partnership
- Knoxville Area Transit (KAT)
- Knox County
- Knox County Community Action Committee
- Knox Housing Partnership
- Knoxville Area Urban League
- Knoxville Chamber
- Knoxville's Community Development Corporation
- Knoxville Leadership Foundation  
Neighborhood Housing
- Knoxville Regional TPO
- City of Knoxville
- Knoxville-Knox County Food Policy Council
- Knoxville-Knox County MPC
- KUB
- Legacy Parks Foundation
- Lenoir City
- Loudon County
- Loudon County Economic Development Agency
- Maryville Center for Strong Communities
- City of Maryville
- Oak Ridge Energy Corridor Coalition

# Committed Partners *cont...*

---

- Oak Ridge National Laboratory Center for Transportation Analysis
- City of Oak Ridge
- Smoky Mountain Greenway Council
- TN Department of Agriculture
- TN Department of Economic & Community Development
- TN Department of Environment & Conservation
- TN Department of Health
- TN Department of Tourism
- TN Department of Transportation
- TN Housing Development Agency
- TN Society of Professional Engineers
- The Development Corporation of Knox County
- Town of Farragut
- U.S. Green Building Council – East Tennessee Chapter
- Union County
- Union County Chamber of Commerce
- University of Tennessee College of Architecture & Design
- University of Tennessee Office of Research
- U.S. Department of Interior, National Park Service, GSMNP

# DOT-EPA-HUD Partnership's “Livability Principles”

---

- Value communities and neighborhoods
- Enhance economic competitiveness
- Support existing communities
- Promote equitable, affordable housing
- Coordinate policies and leverage investment
- Provide more transportation choices

# RPSD Scope: Major Goals

---

- **Year 1:** Establish an initial identity and direction
- **Year 2:** Engage, educate and develop a shared vision
- **Year 3:** Adopt a regional plan for sustainable development and a regional implementation strategy focused on five demonstration communities, one in each county of our region



# RPSD Scope: Major Tasks

---

- **Capacity Building & Community Engagement** – engage & educate
- **Data Collection & Analysis** – create a centralized system for knowledge sharing
- **Visioning & Plan Development** – develop a regional vision
- **Process Evaluation** – evaluate & improve the process
- **Plan Implementation** – identify implementation strategies

# PlanET Organizational Chart



# *Proposed Advisory Groups*

---

- Housing
- Economic & Workforce Development
- Land Use & Accessible Transportation
- Water Infrastructure
- Healthy People
- Healthy Air
- Capacity Building

# Opportunities & Challenges Ahead

---

- Identification of regional champions
- Lack of “carrots”
- Timeframe – 36 months
- Managing the process

---

**Questions or Comments?**