



Location of all underground utilities shown hereon are approximate and are based on field location of visible structures such as catch basins, manholes, water gages, etc. and compiling information from utility company plans. The utilities shown hereon may not comprise all of the existing utilities in this area, either in service or abandoned. In accordance with The Underground Utility Damage Prevention Act, prior to any excavation work call Tennessee One Call System, Inc. at 1-800-351-1111.

ELECTRICAL LEGEND		
SYMBOL	DESCRIPTION	MOUNTING HEIGHT
-----	UNDERGROUND SECONDARY SERVICE	
	PEDESTRIAN LIGHT - SEE FIXTURE SCHEDULE	----
	STREET LIGHT - SEE FIXTURE SCHEDULE	----
	PULL BOX - SEE DETAIL 6 SHEET E8	----
	IN-GRADE LIGHT - SEE FIXTURE SCHEDULE	----
	LIGHTING CONTROL CABINET	----
		----
		----
		----

ELECTRICAL ABBREVIATIONS	
SYMBOL	DESCRIPTION
ABC	ABOVE COUNTER
AFG	ABOVE FINISHED GRADE
AFF	ABOVE FINISHED FLOOR
AHU	AIR HANDLING UNIT
BKR	BREAKER
CKT	CIRCUIT
EF	EXHAUST FAN
EWC	ELECTRIC WATER COOLER
FBO	FURNISHED BY OTHERS
FBC	FURNISHED BY CONTRACTOR
FU	FUSED
GFI	GROUND FAULT INTERRUPTER
GRD/GND	GROUND
IG	ISOLATED GROUND
KUB	KNOXVILLE UTILITIES BOARD
MTD	MOUNTED
NFU	NON-FUSED
NIC	NOT IN CONTRACT
NTS	NOT TO SCALE
O.C.	ON CENTER
PNLBD	PANELBOARD
RT	RAIN TIGHT
SS	SURGE SUPPRESSION DEVICE
SW	SWITCH
TGB	TELECOMMUNICATIONS GROUND BAR
TGMB	TELECOMMUNICATIONS MAIN GROUND BAR
TYP	TYPICAL
UON	UNLESS OTHERWISE NOTED
UPS	UNINTERRUPTIBLE POWER SUPPLY
W	WALL MOUNTED 48" ABOVE FINISHED FLOOR
WH	WATER HEATER
WP	WEATHERPROOF
VIF	VERIFY IN FIELD

FIXTURE SCHEDULE										
DESIGNATION	LAMPS					MOUNTING	DESCRIPTION: SHIELDING, TYPE MATERIALS, FINISH, MOUNTING	MANUFACTURER'S PRODUCT ITEM		REMARKS
	INCANDESCENT	FLUORESCENT	LED	METAL HALIDE	HIGH PRESSURE SODIUM	WATTS (LUMENS)				
								COMPANY	CATALOG NO.	
A			X			59W (8111)	16'-0"	PEDESTRIAN LUMINAIRE, SINGLE HEAD, TYPE 3, 1 @90 DEG., 4000K	COOPER NAVION NVN-AF-01-D-U-T3-10K-4N7-BK-U0060	HAPCO POLE. SEE DETAIL 2, SHEET E8. SEE POLE BASE DETAIL SHEET E10 (KUB STANDARD)
B			X			166W (18119)	30'-3"	ROADWAY LUMINAIRE, SINGLE HEAD, TYPE 3, 1 @90 DEG., 4000K	COOPER NAVION NVN-AF-03-D-U-T3-10K-4N7-BK-U0062	HAPCO POLE. SEE DETAIL 1, SHEET E8. SEE POLE BASE DETAIL SHEET E10 (KUB STANDARD)
B1			X			166W (18119)	30'-3"	ROADWAY LUMINAIRE, SINGLE HEAD, TYPE 3, 1 @90 DEG., 4000K	COOPER NAVION NVN-AF-03-D-U-T3-10K-4N7-BK-U0062	PROVIDE BRACKET ARM FOR MOUNTING FIXTURE TO SIGNAL POLE. REFER TO TRAFFICE SIGNAL PLANS FOR DETAILS
C			X			333W (36032)	30'-3"	ROADWAY LUMINAIRE, SINGLE HEAD, TYPE 3, 1 @90 DEG., 4000K	COOPER NAVION NVN-AF-06-D-U-T3-10K-4N7-BK-U0064	HAPCO POLE. SEE DETAIL 1, SHEET E8. SEE POLE BASE DETAIL SHEET E10 (KUB STANDARD)
D			X			20W (1700)	IN-GRADE	LED ARCHITECTURAL IN-GRADE, 4100K	HYDREL M9720-SS-18LED-WHT41K-MVOLT-MFL-FLC10SR-34S	IN-GRADE SIGN LIGHT FOR PELLISSIPPI STATE COMMUNITY COLLEGE

DESCRIPTION	MAIN CIRCUIT BREAKER	CONTACTOR	AMPS	POLES	CKT. BREAKER	VOLTS	PHASE	LOAD (AMPS)	LOAD	CIRCUIT	REMARKS
PANEL "CP620" KUB DETAIL #B-15586	100 AMP, 2-POLE, SE	LC1	60	2	20A/1P	120	1	5.1	LIGHTING	1	
					20A/1P	120	1	4.2	LIGHTING	2	
		LC2	60	2	20A/1P	120	1	5.2	LIGHTING	3	
					20A/1P	120	1	3.9	LIGHTING	4	
		LC3	60	2	20A/1P	120	1	3.3	LIGHTING	5	
					20A/1P	120	1	3.3	LIGHTING	6	
		LC4	60	2	20A/1P	120	1	2.6	LIGHTING	7	
					20A/1P	120	1	3.9	LIGHTING	8	
TOTAL								31.6	AMPS		

NOTE: 120V CIRCUITS CONSIST OF 1 HOT, 1 NEUTRAL AND 1 GROUND. THE GROUND WIRE MAY BE SHARED, NEUTRAL CANNOT.

DESCRIPTION	MAIN CIRCUIT BREAKER	CONTACTOR	AMPS	POLES	CKT. BREAKER	VOLTS	PHASE	LOAD (AMPS)	LOAD	CIRCUIT	REMARKS
PANEL "CP621" KUB DETAIL #B-15586	100 AMP, 2-POLE, SE	LC1	60	2	20A/1P	120	1	3.8	LIGHTING	1	
					20A/1P	120	1	3.8	LIGHTING	2	
		LC2	60	2	20A/1P	120	1	5.3	LIGHTING	3	
					20A/1P	120	1	5.2	LIGHTING	4	
		LC3	60	2	20A/1P	120	1	2.8	LIGHTING	5	
					20A/1P	120	1	2.8	LIGHTING	6	
		LC4	60	2	20A/1P	120	1	3.9	LIGHTING	7	
					20A/1P	120	1	3.9	LIGHTING	8	
TOTAL								31.5	AMPS		

NOTE: 120V CIRCUITS CONSIST OF 1 HOT, 1 NEUTRAL AND 1 GROUND. THE GROUND WIRE MAY BE SHARED, NEUTRAL CANNOT.

PROJECT No.		YEAR	SHEET No.
15A-R-0584		2017	E1
REVISIONS			
No.	DATE	BY	BRIEF DESCRIPTION

GENERAL NOTES:

- THE DRAWING FILES CONTAINED WITHIN THIS SET ARE DIAGRAMMATIC IN NATURE. ALL PROPOSED CONDUITS ARE TO BE INSTALLED WITHIN RIGHT-OF-WAY. ALL CONDUIT ROUTING SHALL BE OUT-SIDE OF TREE CANOPY DRIP LINE. FINAL CONDUIT ROUTING WILL BE DETERMINED AND COORDINATED AT TIME OF INSTALLATION. A 13" x 24" PULL BOX SHALL BE INSTALLED WHERE ANY CONDUIT RUN CHANGE IN DIRECTION AND/OR ELEVATION EXCEEDS 270 DEGREES. COORDINATE ELECTRICAL INSTALLATION WITH ALL TRADES PRIOR TO BEGINNING EXCAVATION.
- LEGEND ITEMS SHOWN ARE FOR REFERENCE ONLY AND MAY OR MAY NOT BE INCLUDED IN PROJECT.
- EXISTING UTILITIES - NUMEROUS UNDERGROUND UTILITIES EXIST INCLUDING MAJOR CONCRETE CULVERTS. CONTRACTOR SHALL COORDINATE WITH ALL UTILITY COMPANIES. VERIFY EXISTING UTILITIES AND CULVERT PRIOR TO COMMENCEY OF WORK. THE DRAWINGS IDENTIFY AND/OR PROVIDE DIRECTIONS FOR RELOCATING OR COORDINATING WITH THESE UTILITIES. COORDINATE WITH KUB AND OTHER PROVIDERS. KUB WILL REMOVE/RELOCATE OVERHEAD ELECTRIC POWER. CONTRACTOR SHALL BEAR COSTS FOR DAMAGE TO ANY EXISTING UTILITIES.
- CONTRACTOR SHALL VISIT THE SITE, VERIFY EXISTING CONDITIONS AND BECOME FAMILIAR WITH INTENDED WORK INVOLVED.
- CONTACT SERVICING UTILITY COMPANIES AND CONFIRM REQUIREMENTS, SECURE AND PAY FOR ALL FEES AND PERMITS.
- CONFORM TO ALL LOCAL, STATE AND NATIONAL CODES, THE UTILITY CO., AND REQUIREMENTS OF AUTHORITIES HAVING JURISDICTION.
- CONTRACTOR SHALL PROVIDE 210lb TEST PULL STRING IN ALL CONDUITS FOR FUTURE AND/OR USE BY OTHERS.
- ALL CONDUITS AND POWER CONDUCTORS ILLUSTRATED AND/OR REQUIRED AND SHOWN WITHIN "LIMITS OF CONSTRUCTION" AREA, SHALL BE FURNISHED AND INSTALLED BY ELECTRICAL CONTRACTOR.
- DO NOT SCALE DRAWINGS.
- ALL WIRING SHALL BE XHHW, #6 MIN. COPPER (FEEDER CIRCUIT) IN CONDUIT AND #10 IN POLE UNLESS OTHERWISE NOTED.
- SEE SHEETS 22, 23 & 24 FOR TREE PROTECTION, DEMOLITION AND NOTES.
- ALL CONDUIT(S) AND POWER FEEDER(S) FOR SIGNALIZATION EQUIPMENT IS PROVIDED BY OTHERS, SEE SIGNALIZATION PLANS FOR COORDINATION.
- EXISTING LIGHTING POLES, POLE LIGHTING FIXTURES, AND OVERHEAD SECONDARY SHALL BE DEMOLISHED BY OTHERS.
- CONTRACTOR SHALL DEMOLISH EXISTING IN-GRADE LIGHTING FIXTURES LOCATED IN FRONT OF MISSISSIPPI STATE COMMUNITY COLLEGE. TYPICAL OF (9) FIXTURES. CONTRACTOR SHALL MAINTAIN EXISTING CIRCUITS FEEDING IN-GRADE FIXTURES FOR RECONNECTION TO NEW IN-GRADE FIXTURES, TYPE "D". SEE SHEET E5 FOR ADDITIONAL INFORMATION.
- CONTRACTOR SHALL CAP ALL SPARES / UNUSED CONDUITS.



CITY OF KNOXVILLE OFFICE OF REDEVELOPMENT		DRAWN: KCB
GENERAL NOTES, LEGEND AND SCHEDULES MAGNOLIA AVENUE STREETSCAPE PROJECT PHASE I		DESIGNED: RMW
		DATE: 11-06-17
		CHECKED: GRR
SCALE: N.T.S.		APPROVED: RMW



PROJECT No.		YEAR		SHEET No.	
15A-R-0584		2017		E2	
REVISIONS					
No.	DATE	BY	BRIEF DESCRIPTION		

- GENERAL NOTES:
- SEE SHEET E1 FOR GENERAL NOTES AND LEGEND
  - SEE SHEET E8 THRU E10 FOR DETAILS

CIRCUIT WIRE SIZE			
CKT#	WIRE SIZE	CKT#	WIRE SIZE
CP620-1	#4	CP621-1	#4
CP620-2	#6	CP621-2	#6
CP620-3	#4	CP621-3	#4
CP620-4	#6	CP621-4	#4
CP620-5	#6	CP621-5	#6
CP620-6	#6	CP621-6	#6
CP620-7	#6	CP621-7	#6
CP620-8	#6	CP621-8	#6

KEYED NOTES:

- (1) 2"C, 2#6, 1#6 GND
- (1) 2"C, 4#6, 1#6 GND
- STREET LIGHT MOUNTED ON TRAFFIC SIGNAL POLE SEE SIGNAL PLANS
- SEE DETAIL 4, SHEET E8
- SEE DETAIL 5, SHEET E8 ENCASE MIN. 3' BEYOND BACK OF CURB
- SEE DETAIL 6, SHEET E8
- (1) 2"C SPARE
- SEE DETAIL 9 SHEET E8
- PROVIDE WATER-PROOF TRON INLINE FUSE HOLDER HEB-AY W/5 AMP KTK TYPE FUSE FOR LIGHTS. UNLESS NOTED OTHERWISE
- (1) 2"C, 2#4, 1#4 GND
- (1) 2"C, 4#4, 1#4 GND
- (1) 3/4"C, 2#10, 1#10 GND PROVIDE WATER-PROOF TRON INLINE FUSE HOLDER HEB-AY W/5 AMP KTK TYPE FUSE FOR FUTURE MONUMENT LIGHTING. COIL 10' OF CONDUCTORS AND SAFE OFF.

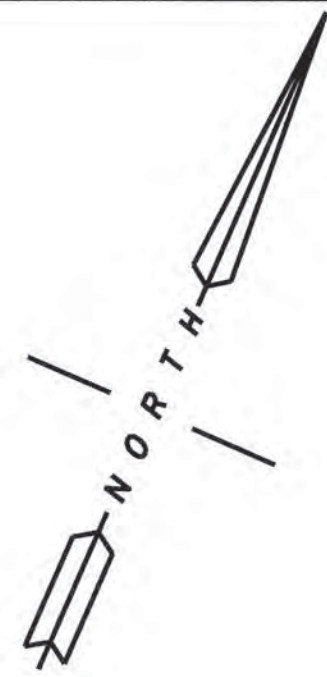


Location of all underground utilities shown hereon are approximate and are based on field location of visible structures such as catch basins, manholes, water gates, etc. and compiling information from utility company plans. The utilities shown hereon may not comprise all of the existing utilities in this area, either in service or abandoned. In accordance with The Underground Utility Damage Prevention Act, prior to any excavation work call Tennessee One Call System, Inc. at 1-800-351-1111.



CITY OF KNOXVILLE OFFICE OF REDEVELOPMENT		DRAWN: KCB
ELECTRICAL SITE PLAN		DESIGNED: RMW
MAGNOLIA AVENUE STREETSCAPE PROJECT PHASE I		DATE: 11-06-17
BEGIN OF PROJECT TO STA. 14+00 SCALE: 1" = 20'		CHECKED: GRR
		APPROVED: RMW



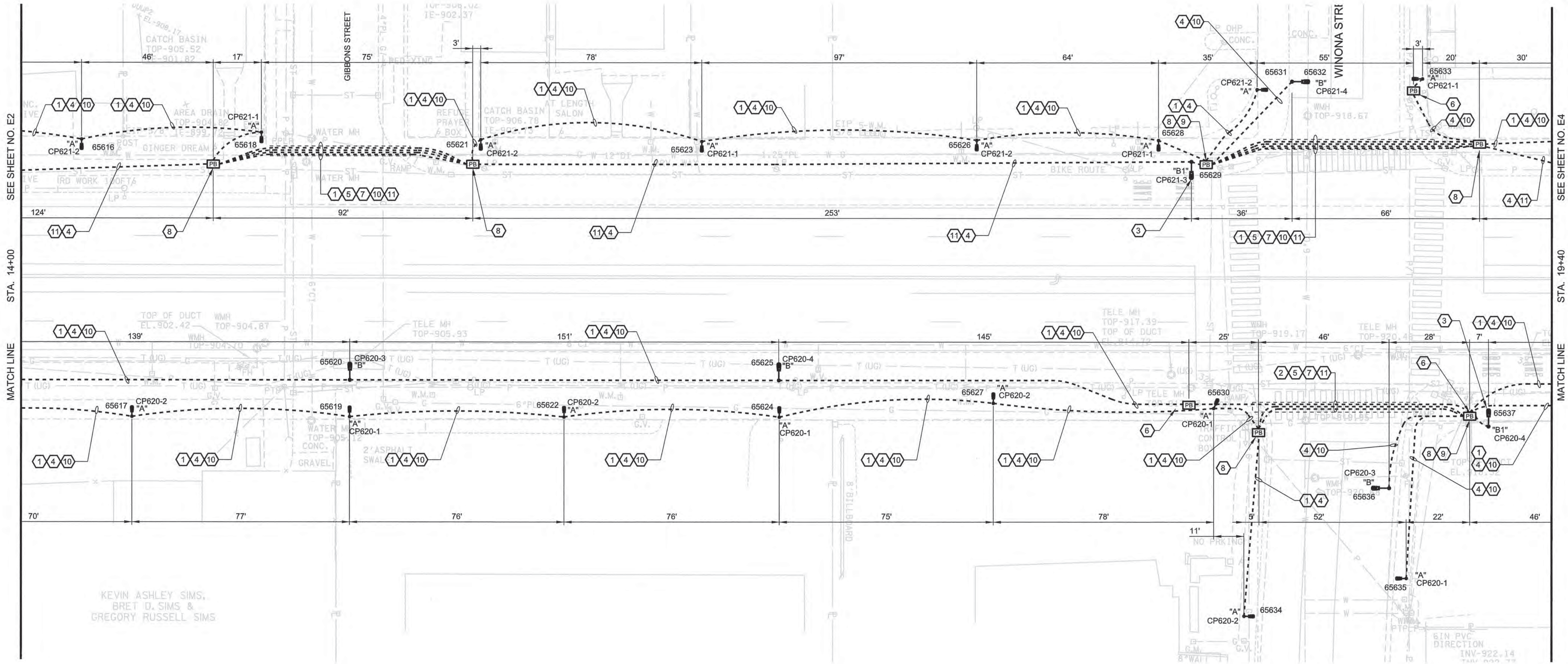


CIRCUIT WIRE SIZE			
CKT#	WIRE SIZE	CKT#	WIRE SIZE
CP620-1	#4	CP621-1	#4
CP620-2	#6	CP621-2	#6
CP620-3	#4	CP621-3	#4
CP620-4	#6	CP621-4	#4
CP620-5	#6	CP621-5	#6
CP620-6	#6	CP621-6	#6
CP620-7	#6	CP621-7	#6
CP620-8	#6	CP621-8	#6

PROJECT No.		YEAR	SHEET No.
15A-R-0584		2017	E3
REVISIONS			
No.	DATE	BY	BRIEF DESCRIPTION

GENERAL NOTES:  
1. SEE SHEET E1 FOR GENERAL NOTES AND LEGEND  
2. SEE SHEET E8 THRU E10 FOR DETAILS

- KEYED NOTES:
- 1 (1) 2"C, 2#6, 1#6 GND
  - 2 (1) 2"C, 4#6, 1#6 GND
  - 3 STREET LIGHT MOUNTED ON TRAFFIC SIGNAL POLE SEE SIGNAL PLANS
  - 4 SEE DETAIL 4, SHEET E8
  - 5 SEE DETAIL 5, SHEET E8 ENCASE MIN. 3' BEYOND BACK OF CURB
  - 6 SEE DETAIL 6, SHEET E8
  - 7 (1) 2"C SPARE
  - 8 SEE DETAIL 9, SHEET E8
  - 9 PROVIDE WATER-PROOF TRON INLINE FUSE HOLDER HEB-AY W/5 AMP KTK TYPE FUSE FOR LIGHTS. UNLESS NOTED OTHERWISE
  - 10 (1) 2"C, 2#4, 1#4 GND
  - 11 (1) 2"C, 4#4, 1#4 GND



Location of all underground utilities shown hereon are approximate and are based on field location of visible structures such as catch basins, manholes, water gates, etc. and compiling information from utility company plans. The utilities shown hereon may not comprise all of the existing utilities in this area, either in service or abandoned. In accordance with The Underground Utility Damage Prevention Act, prior to any excavation work call Tennessee One Call System, Inc. at 1-800-351-1111.



CITY OF KNOXVILLE OFFICE OF REDEVELOPMENT		DRAWN: KCB
ELECTRICAL SITE PLAN		DESIGNED: RMW
MAGNOLIA AVENUE STREETSCAPE PROJECT PHASE I		DATE: 11-06-17
STA. 14+00 TO STA. 19+40 SCALE: 1" = 20'		CHECKED: GRR
		APPROVED: RMW

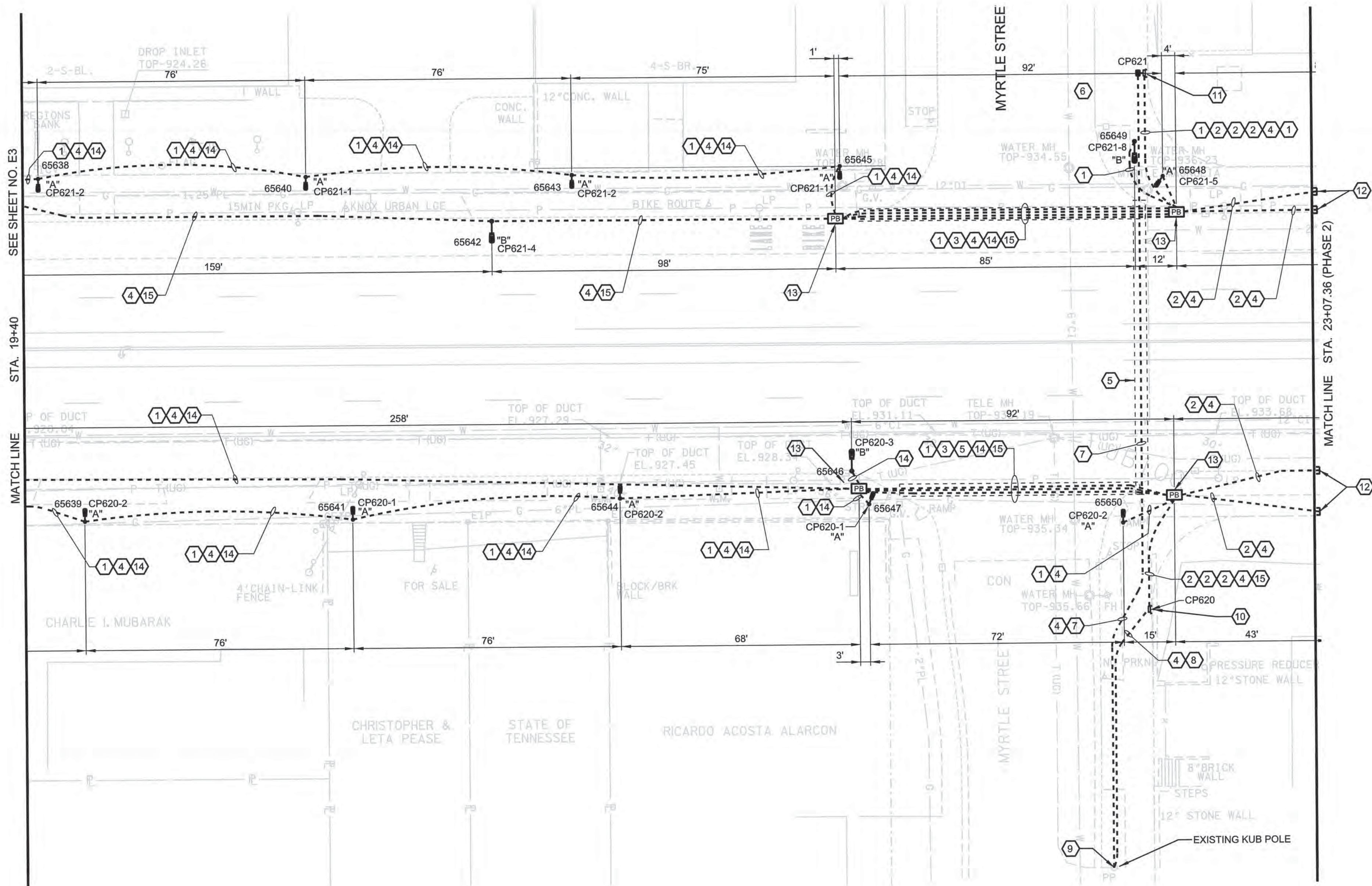


PROJECT No.	YEAR	SHEET No.	
15A-R-0584	2017	E4	
REVISIONS			
No.	DATE	BY	BRIEF DESCRIPTION

GENERAL NOTES:  
1. SEE SHEET E1 FOR GENERAL NOTES AND LEGEND  
2. SEE SHEET E8 THRU E10 FOR DETAILS

CIRCUIT WIRE SIZE			
CKT#	WIRE SIZE	CKT#	WIRE SIZE
CP620-1	#4	CP621-1	#4
CP620-2	#6	CP621-2	#6
CP620-3	#4	CP621-3	#4
CP620-4	#6	CP621-4	#4
CP620-5	#6	CP621-5	#6
CP620-6	#6	CP621-6	#6
CP620-7	#6	CP621-7	#6
CP620-8	#6	CP621-8	#6

- KEYED NOTES:
- 1 (1) 2"C, 2#6, 1#6 GND
  - 2 (1) 2"C, 4#6, 1#6 GND
  - 3 (1) 2"C SPARE
  - 4 SEE DETAIL 4, SHEET E8
  - 5 SEE DETAIL 5, SHEET E8  
ENCASE MIN. 3' BEYOND  
BACK OF CURB
  - 6 SEE DETAIL 6, SHEET E8
  - 7 (1) 2"C, 3#3/0  
(1) 2"C SPARE
  - 8 (1) 2"C, 3#1/0
  - 9 SEE DETAIL 7, SHEET E8 AND  
DETAIL 1, SHEET E10 FOR SECONDARY  
RISER INFORMATION.
  - 10 PROPOSED LIGHTING CONTROL  
CABINET "CP620" SEE DETAILS 1 & 2,  
SHEET E9. SETBACK 25' MIN FROM  
MAGNOLIA AVE. ROW.
  - 11 PROPOSED LIGHTING CONTROL  
CABINET "CP621" SEE DETAILS 1 & 2,  
SHEET E9. SETBACK 25' MIN FROM  
MAGNOLIA AVE. ROW.
  - 12 STUB 2" CONDUIT AND CAP  
FOR FUTURE PHASE II
  - 13 SEE DETAIL 9, SHEET E8
  - 14 (1) 2"C, 2#4, 1#4 GND
  - 15 (1) 2"C, 4#4, 1#4 GND



Location of all underground utilities shown hereon are approximate and are based on field location of visible structures such as catch basins, manholes, water gates, etc. and compiling information from utility company plans. The utilities shown hereon may not comprise all of the existing utilities in this area, either in service or abandoned. In accordance with The Underground Utility Damage Prevention Act, prior to any excavation work call Tennessee One Call System, Inc. at 1-800-351-1111.



CITY OF KNOXVILLE  
OFFICE OF REDEVELOPMENT

ELECTRICAL SITE PLAN  
MAGNOLIA AVENUE  
STREETSCAPE PROJECT  
PHASE I

STA. 19+40 TO STA. E.O.P.  
SCALE: 1" = 20'

DRAWN: KCB  
DESIGNED: RMW  
DATE: 11-06-17  
CHECKED: GRR  
APPROVED: RMW



